

PICTURE DAY SCHEDULES

MARCH 11

4:30 Competitive Solos & Duos
4:45 Diamond Team
5:00 Gems Team
5:15 Platinum Team
5:30 Elite Hip Hop & Elite Lyrical Teams

MARCH 13

4:30 Int Ballet & Adv Ballet
4:45 Int Jazz & Adv Jazz
5:00 Int/Adv Tap
5:15 Int/Adv Hip Hop
5:30 Int/Adv Lyrical

APRIL 12

9:00 Tiny Toes
9:15 Tiny Petites
9:30 Petite A
9:45 Petite B
10:00 Beginner A Ballet Only
10:15 Beginner B Ballet Only
10:30 Beginner A Pom Only
10:45 Beginner B Pom Only
11:00 Beginner Ballet Only

APRIL 13

1:00 Junior II Ballet Only
1:15 Junior II Jazz
1:30 Junior II Hip Hop
1:45 Junior II Pom
2:00 Junior II Lyrical
2:15 Junior I Jazz
2:30 Junior I Hip Hop
2:45 Junior I Pom
3:00 Junior I Lyrical
3:15 Junior I Ballet Only

On the following pages you'll see pictures of each recital costume along with details regarding the required shoes, tights, hair, hairpiece, etc for our Spring Recital Performance. These same details apply to Picture Day, with the exception of hairstyle-dancers can wear their hair in any style they prefer for picture day (buns are not required).



**SPRING RECITAL
COSTUME DETAILS**

PETITE A



SHOES: LIGHT PINK BALLET
TIGHTS: LIGHT PINK BALLET
HAIR: HIGH BUN
HAIRPIECE: DANCER'S RIGHT SIDE OF BUN

PETITE B



SHOES: LIGHT PINK BALLET
TIGHTS: LIGHT PINK BALLET
HAIR: HIGH BUN
HAIRPIECE: DANCER'S RIGHT SIDE OF BUN

TINY PETITES



SHOES: LIGHT PINK BALLET
TIGHTS: LIGHT PINK BALLET
HAIR: HIGH BUN
HAIRPIECE: FRONT CENTER OF BUN

TINY TOES



SHOES: LIGHT PINK BALLET
TIGHTS: LIGHT PINK BALLET
HAIR: HIGH BUN
HAIRPIECE: FRONT CENTER OF BUN

BEGINNER A BALLET AND TAP



SHOES: LIGHT PINK BALLET & BLACK TAP
TIGHTS: TAN
HAIR: HIGH BUN
HAIRPIECE: DANCER'S RIGHT SIDE OF BUN

BEGINNER B BALLET AND TAP



SHOES: LIGHT PINK BALLET & BLACK TAP
TIGHTS: TAN
HAIR: HIGH BUN
HAIRPIECE: FRONT CENTER OF BUN

BEGINNER A POM & HIP HOP



SHOES: TAN JAZZ SHOES & SILVER SNEAKERS
TIGHTS: TAN
HAIR: HIGH BUN
HAIRPIECE: FRONT CENTER OF BUN

BEGINNER B POM & HIP HOP



SHOES: TAN JAZZ SHOES & SILVER SNEAKERS
TIGHTS: TAN
HAIR: HIGH BUN
HAIRPIECE: FRONT CENTER OF BUN

BEGINNER POM AND BALLET



SHOES: TAN JAZZ SHOES & LIGHT PINK BALLET
TIGHTS: TAN
HAIR: HIGH BUN
HAIRPIECE: FRONT CENTER OF BUN

GEMS TEAM



SHOES: TAN JAZZ SHOES
TIGHTS: TAN
HAIR: HIGH BUN
HAIRPIECE: FRONT CENTER OF BUN

JUNIOR I BALLET & TAP



SHOES: LIGHT PINK BALLET & BLACK TAP
TIGHTS: TAN
HAIR: HIGH BUN OR LOW BUN
HAIRPIECE: FRONT CENTER OF BUN

JUNIOR II BALLET & TAP



SHOES: LIGHT PINK BALLET & BLACK TAP
TIGHTS: TAN
HAIR: HIGH BUN OR LOW BUN
HAIRPIECE: DANCER'S RIGHT SIDE OF HEAD

JUNIOR I HIP HOP



SHOES: SILVER SNEAKERS
TIGHTS: TAN
HAIR: HIGH BUN OR LOW BUN
HAIRPIECE: NONE

JUNIOR II HIP HOP



SHOES: SILVER SNEAKERS
TIGHTS: TAN
HAIR: HIGH BUN OR LOW BUN
HAIRPIECE: NONE

JUNIOR I POM



SHOES: TAN JAZZ
TIGHTS: TAN
HAIR: HIGH BUN OR LOW BUN
HAIRPIECE: NONE

JUNIOR II POM



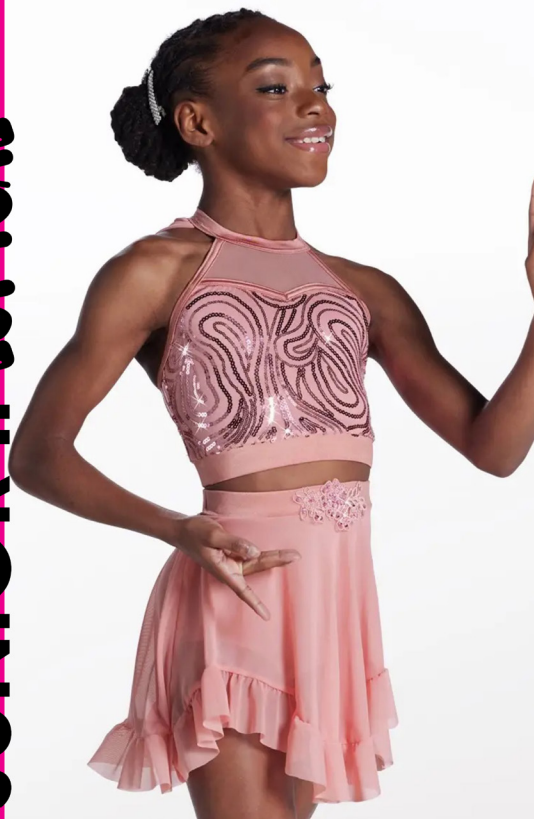
SHOES: TAN JAZZ
TIGHTS: TAN
HAIR: HIGH BUN OR LOW BUN
HAIRPIECE: NONE

JUNIOR I MYRICAL



SHOES: TAN HALF SOLE TURNERS
TIGHTS: TAN STIRRUP*
HAIR: HIGH BUN OR LOW BUN
HAIRPIECE: DANCER'S RIGHT SIDE OF HEAD

JUNIOR II MYRICAL



SHOES: TAN HALF SOLE TURNERS
TIGHTS: TAN STIRRUP*
HAIR: HIGH BUN OR LOW BUN
HAIRPIECE: DANCER'S RIGHT SIDE OF HEAD

JUNIOR I JAZZ



SHOES: TAN JAZZ
TIGHTS: TAN
HAIR: HIGH BUN OR LOW BUN
HAIRPIECE: FRONT CENTER OF BUN

JUNIOR II JAZZ



SHOES: TAN JAZZ
TIGHTS: TAN
HAIR: HIGH BUN OR LOW BUN
HAIRPIECE: NONE

INTERMEDIATE BALLET



SHOES: LIGHT PINK BALLET
TIGHTS: LIGHT PINK
HAIR: HIGH BUN OR LOW BUN
HAIRPIECE: DANCER'S RIGHT SIDE OF BUN

INTERMEDIATE JAZZ



SHOES: TAN JAZZ
TIGHTS: TAN
HAIR: HIGH BUN OR LOW BUN
HAIRPIECE: NONE

INT/ADV LYRICAL



SHOES: TAN HALF SOLE TURNERS
TIGHTS: TAN STIRRUP*
HAIR: HIGH BUN OR LOW BUN
HAIRPIECE: DANCER'S RIGHT SIDE OF HEAD

INT/ADV HIP HOP



SHOES: BLACK SNEAKERS
TIGHTS: NONE
HAIR: HIGH BUN OR LOW BUN
HAIRPIECE: NONE

INT/ADV TAP



SHOES: BLACK TAP
TIGHTS: TAN
HAIR: HIGH BUN OR LOW BUN
HAIRPIECE: NONE

ADVANCED BALLET



SHOES: PINK BALLET OR POINTE
TIGHTS: LIGHT PINK
HAIR: HIGH BUN OR LOW BUN
HAIRPIECE: DANCER'S RIGHT SIDE OF BUN

ADVANCED JAZZ



SHOES: TAN JAZZ
TIGHTS: TAN
HAIR: HIGH BUN OR LOW BUN
HAIRPIECE: NONE

ELITE TEAM LYRICAL



SHOES: TAN HALF SOLE TURNERS
TIGHTS: TAN STIRRUP*
HAIR: LOW BUN
HAIRPIECE: NONE

ELITE HIP HOP TEAM



SHOES: BLACK SNEAKERS
TIGHTS: NONE
HAIR: LOW BRAIDED PONY
HAIRPIECE: NONE

DIAMOND TEAM



SHOES: TAN JAZZ
TIGHTS: TAN
HAIR: LOW BUN
HAIRPIECE: NONE

PLATINUM TEAM



SHOES: TAN JAZZ
TIGHTS: NONE
HAIR: LOW BUN
HAIRPIECE: NONE